

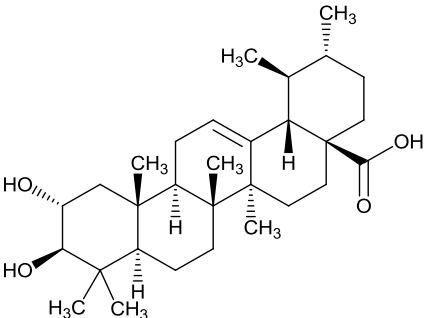
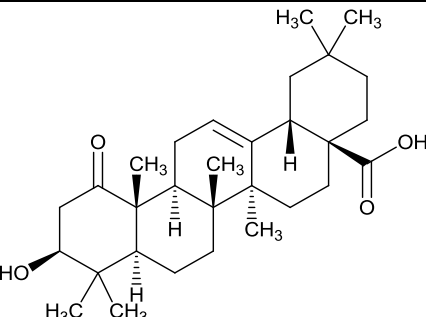
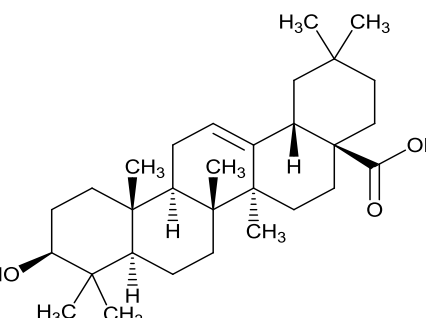
# Certificate

## LAGERSTROEMIA SPECIOSA LEAF DRY EXTRACT

USP Catalog No.: 1048415

USP Lot No.: F00360

Only compendial components as listed in the monograph are shown below

<u><b>Corosolic acid</b></u> <b>((2<math>\alpha</math>,3<math>\beta</math>)-2,3-Dihydroxyurs-12-en-28-oic acid)</b>	
	CAS No. 4547-24-4
	Molecular Formula C <sub>30</sub> H <sub>48</sub> O <sub>4</sub>
	Molecular Weight 472.71
<u><b>Virgatic acid</b></u> <b>(3<math>\beta</math>-Hydroxy-1-oxoolean-12-en-28-oic acid)</b>	
	CAS No. 14356-51-5
	Molecular Formula C <sub>30</sub> H <sub>46</sub> O <sub>4</sub>
	Molecular Weight 470.69
<u><b>Oleanolic acid</b></u> <b>(3<math>\beta</math>-Hydroxyolean-12-en-28-oic acid)</b>	
	CAS No. 508-02-1
	Molecular Formula C <sub>30</sub> H <sub>48</sub> O <sub>3</sub>
	Molecular Weight 456.71

Copyright 2014 The United States Pharmacopeial Convention. All rights reserved.

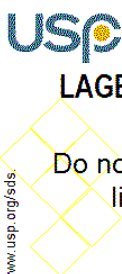
USP Certificate

Page 1 of 3

Certificate Date: 16Jun2014  
USP Template No. CERT1\_4-01  
Effective February 11, 2014

**LABEL TEXT**

For use with specified USP compendial tests.  
Not for use as a drug. See SDS prior to use  
at [www.usp.org/sds](http://www.usp.org/sds).



**USP REFERENCE STANDARD**

**LAGERSTROEMIA SPECIOSA LEAF DRY EXTRACT 1 g**

Do not dry. Keep container tightly closed. Protect from  
light and moisture. Material is hygroscopic.

USP, 12601 Twinbrook Pkwy, Rockville, MD, +1-301-881-0666  
CAT. NO. 1048415 Material mfd. in India

LOT: F00360



*Jeri L. Joth*

*Quality Assurance*

**Calculation Value**

Unless otherwise stated on the Reference Standard label, a value of 100.0% should be used in the compendial applications for which the use of this Reference Standard is intended. Please refer to the specific Reference Standard label for further information.

**Expiration**

Current lots are identified in the current USP Catalog. In some cases, the previous lot may still be considered valid for use. If so, it is identified in the column marked "Previous Lot/Valid Use Date."

It is the responsibility of each user to determine that this lot is current or valid when used. For the most up-to-date information, please refer to the USP Store at [www.usp.org](http://www.usp.org).

**Instructions for Use**

Follow the instructions on the label of the USP Reference Standard and in the appropriate USP documentary standard(s).

**Non-Monograph Use**

The suitability of this Reference Standard for use in non-compendial applications is solely the responsibility of the user.

**LEGAL NOTICE**

USP WARRANTS GOOD TITLE TO USP REFERENCE STANDARDS ON DISPATCH FROM USP. THE FOREGOING WARRANTY IS IN LIEU OF ANY OTHER WARRANTIES, EXPRESS OR IMPLIED, INCLUDING WITHOUT LIMITATION ANY WARRANTY OF MERCHANTABILITY OR FITNESS FOR A PARTICULAR PURPOSE, OR ANY WARRANTY THAT THE PRODUCTS, INCLUDING THIS CERTIFICATE, ARE OF MERCHANTABILITY QUALITY. USP'S LIABILITY ARISING OUT OF OR RELATING TO THE SUPPLY OF USP REFERENCE STANDARDS AND THIS CERTIFICATE SHALL IN NO EVENT INCLUDE LOSS OF PROFITS, COST OF PROCURING SUBSTITUTE GOODS OR SERVICES, OR ANY INCIDENTAL, INDIRECT, OR CONSEQUENTIAL DAMAGES OF ANY KIND, EVEN IF USP IS AWARE OF THE POSSIBILITY OF SUCH DAMAGES. WITHOUT LIMITING THE GENERALITY OF THE FOREGOING, USP DOES NOT WARRANT THAT THE USE OR RESALE OF USP REFERENCE STANDARDS, INCLUDING THEIR USE TO PERFORM TESTS AND ASSAYS PUBLISHED BY USP, WILL NOT INFRINGE UNITED STATES OR ANY OTHER PATENTS.

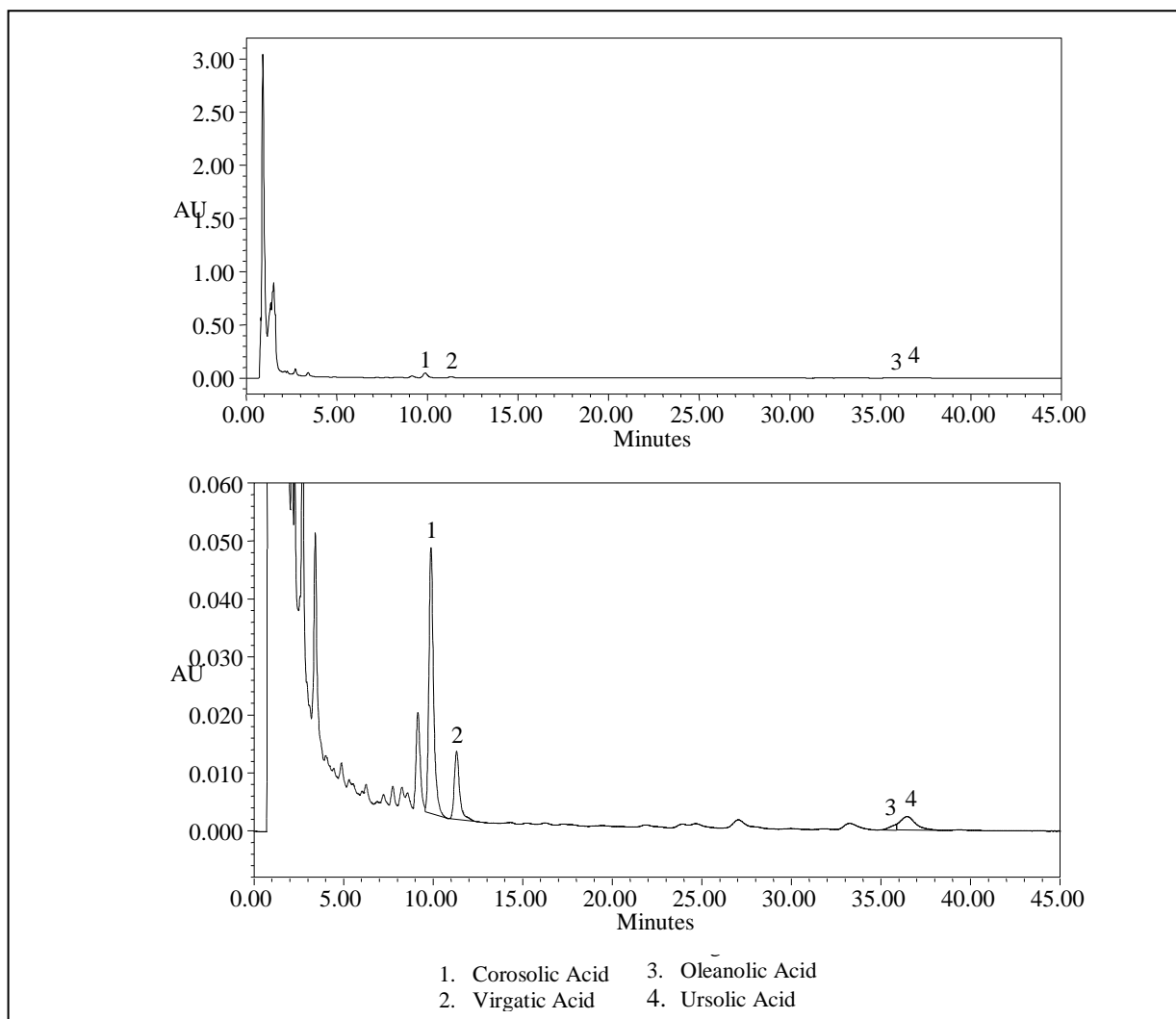
USP Reference Standards are not intended for use as drugs, dietary supplements, or as medical devices.

This certificate may not be reproduced without the express written permission of USP.

# Typical Chromatogram

## USP Lagerstroemia speciosa Leaf Dry Extract RS

<b>Catalog Number:</b> 1048415
<b>Lot:</b> F00360
<b>Monograph:</b> Lagerstroemia speciosa Leaf Dry Extract
<b>Publication:</b> HMC
<b>Test:</b> Assay, Content of Corosolic Acid
<b>Sample:</b> Standard Solution B



This chromatogram is supplied for information only, unless otherwise specified in an applicable monograph or general chapter.