

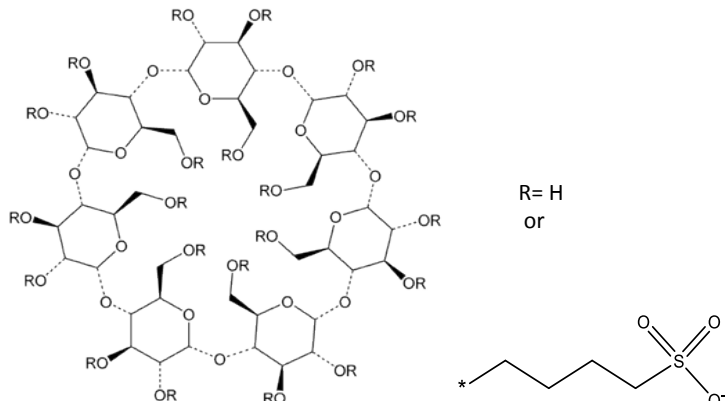
# Certificate

## BETADEX SULFOBUTYL ETHER SODIUM

*(Beta Cyclodextrin Sulfobutyl Ether Sodium)*

USP Catalog No.: 1065550

USP Lot No.: R057H0

 <p>R= H or *-CH<sub>2</sub>CH<sub>2</sub>CH<sub>2</sub>CH<sub>2</sub>SO<sub>3</sub><sup>-</sup></p>	CAS No.: 182410-00-0
	Molecular Formula: $C_{42}H_{70-n}O_{35} \cdot (C_4H_8SO_3Na)_n$
	Molecular Weight: N/A

**LABEL TEXT**

For use with specified USP compendial tests.  
Not for use as a drug. See SDS prior to use  
at [www.usp.org/sds](http://www.usp.org/sds).



Lot: R057H0

**USP REFERENCE STANDARD**

**BETADEX SULFOBUTYL ETHER SODIUM 500 mg**



Warning! May cause an allergic skin reaction.

Do not dry. For quantitative applications, determine the water content  
titrimetrically at the time of use and use a value of 0.999 mg of betadex  
sulfobutyl ether sodium per mg of material on the anhydrous basis.

Keep container tightly closed. The material is hygroscopic.

USP, 12601 Twinbrook Pkwy, Rockville, MD, +1-301-881-0666  
Cat. No. 1065550 Material mfd. in Portugal

Contaminated work clothing must not be allowed out of the  
workplace. Wear protective gloves. If on skin: Wash with plenty  
of water. If skin irritation or rash occurs: Get medical  
advice/attention. Wash contaminated clothing before reuse.  
Dispose of contents/container in accordance with  
local/regional/national/international regulations.

*Jeri L. Joth*

*Quality Assurance*

**Calculation Value**

If a value is not provided on the label or accompanying documentation and the Reference Standard has a quantitative USP compendial application, a value of 100.0% is used. The purity value is not applicable for qualitative uses. Please refer to the specific Reference Standard label for further information.

**Expiration**

Current lots are identified in the current USP Catalog. In some cases, the previous lot may still be considered valid for use. If so, it is identified in the column marked "Previous Lot/Valid Use Date."

It is the responsibility of each user to determine that this lot is current or valid when used. For the most up-to-date information, please refer to the USP Store at [www.usp.org](http://www.usp.org).

**Instructions for Use**

Follow the instructions on the label of the USP Reference Standard and in the appropriate USP documentary standard(s).

**Non-Monograph Use**

The suitability of this Reference Standard for use in non-compendial applications is solely the responsibility of the user.

**LEGAL NOTICE**

USP WARRANTS GOOD TITLE TO USP REFERENCE STANDARDS ON DISPATCH FROM USP. THE FOREGOING WARRANTY IS IN LIEU OF ANY OTHER WARRANTIES, EXPRESS OR IMPLIED, INCLUDING WITHOUT LIMITATION ANY WARRANTY OF MERCHANTABILITY OR FITNESS FOR A PARTICULAR PURPOSE, OR ANY WARRANTY THAT THE PRODUCTS, INCLUDING THIS CERTIFICATE, ARE OF MERCHANTABILITY QUALITY. USP'S LIABILITY ARISING OUT OF OR RELATING TO THE SUPPLY OF USP REFERENCE STANDARDS AND THIS CERTIFICATE SHALL IN NO EVENT INCLUDE LOSS OF PROFITS, COST OF PROCURING SUBSTITUTE GOODS OR SERVICES, OR ANY INCIDENTAL, INDIRECT, OR CONSEQUENTIAL DAMAGES OF ANY KIND, EVEN IF USP IS AWARE OF THE POSSIBILITY OF SUCH DAMAGES. WITHOUT LIMITING THE GENERALITY OF THE FOREGOING, USP DOES NOT WARRANT THAT THE USE OR RESALE OF USP REFERENCE STANDARDS, INCLUDING THEIR USE TO PERFORM TESTS AND ASSAYS PUBLISHED BY USP, WILL NOT INFRINGE UNITED STATES OR ANY OTHER PATENTS.

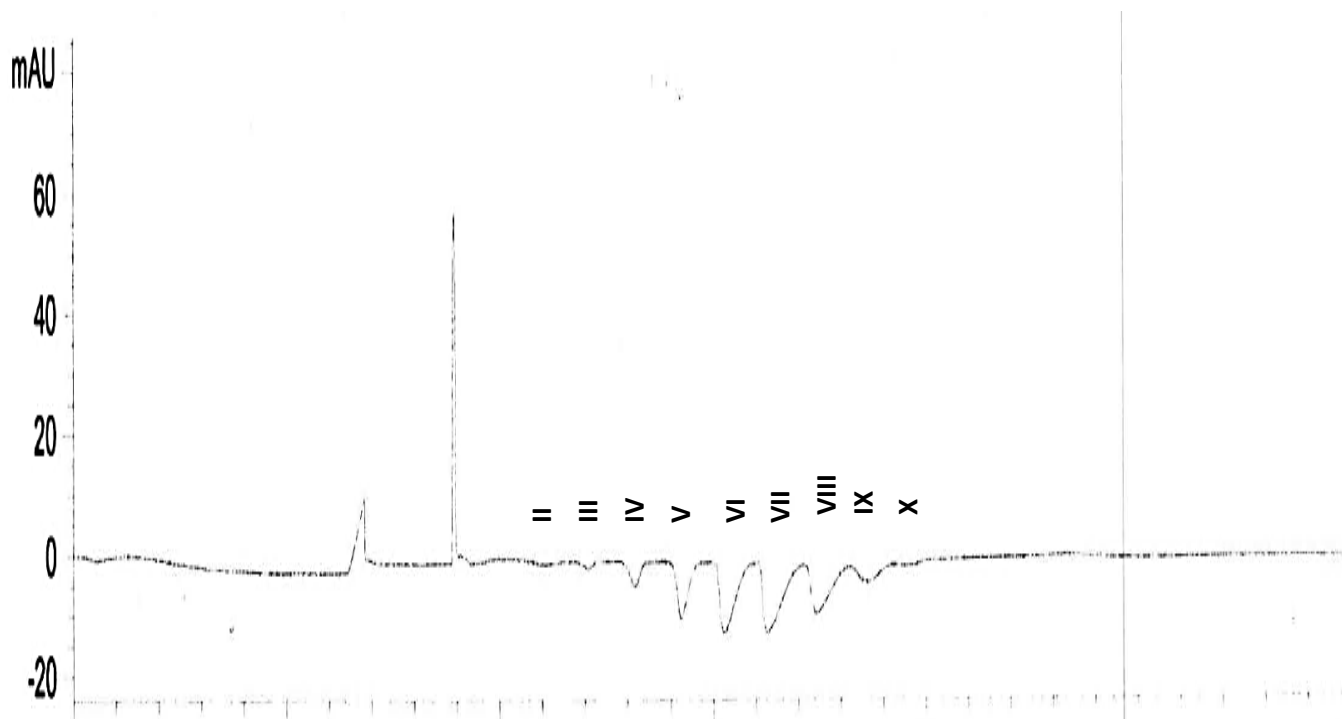
USP Reference Standards are not intended for use as drugs, dietary supplements, or as medical devices.

This certificate may not be reproduced without the express written permission of USP.

# Typical Electropherogram

## USP BETADEX SULFOBUTYL ETHER SODIUM RS

<b>Catalog Number:</b> 1065550
<b>Lot:</b> R057H0
<b>Monograph:</b> Betadex Sulfobutyl Ether Sodium
<b>Publication:</b> USP39/NF34
<b>Test:</b> Average Degree of Substitution
<b>Sample:</b> Standard solution)



Betadex sulfobutyl ether sodium peaks, II, III, IV, V, VI, VII, VIII, IX and X, contains beta cyclodextrins molecule with 2, 3, 4, 5, 6, 7, 8, 9, and 10 sulfobutyl substituent(s), respectively.

Note: The electropherogram's polarity for the signal going to the detector was reversed from that of the previous lot F1K026; however, the quantitation was not affected.

This electropherogram is supplied for information only, unless otherwise specified in an applicable monograph or general chapter.